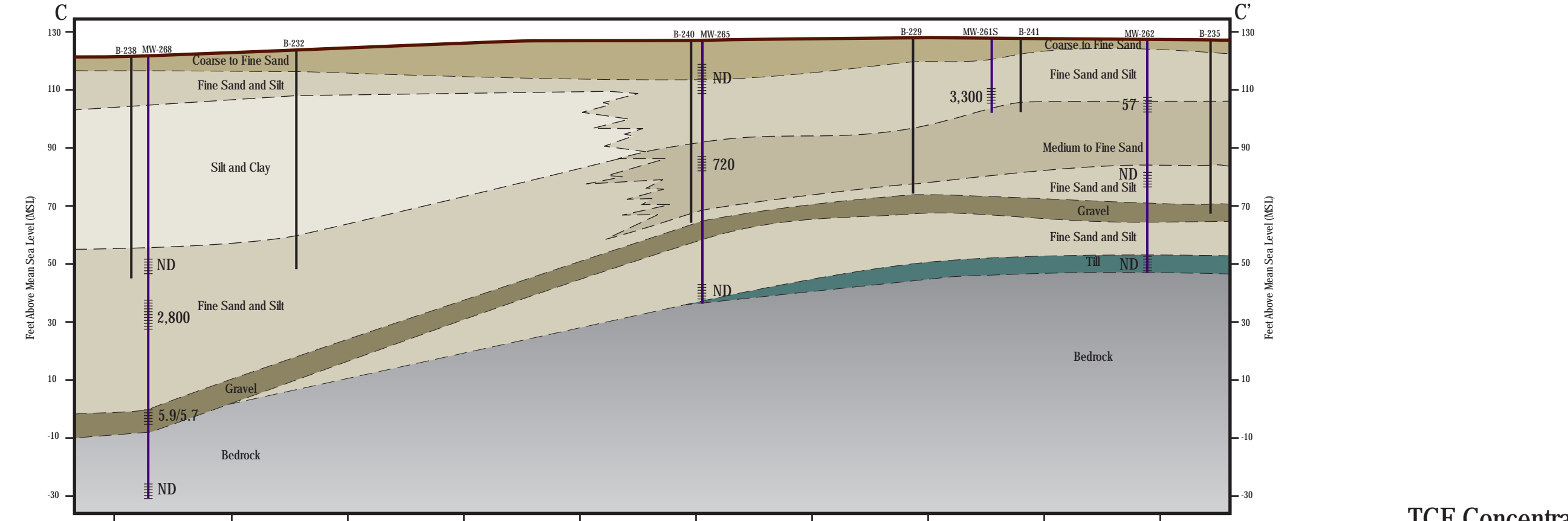
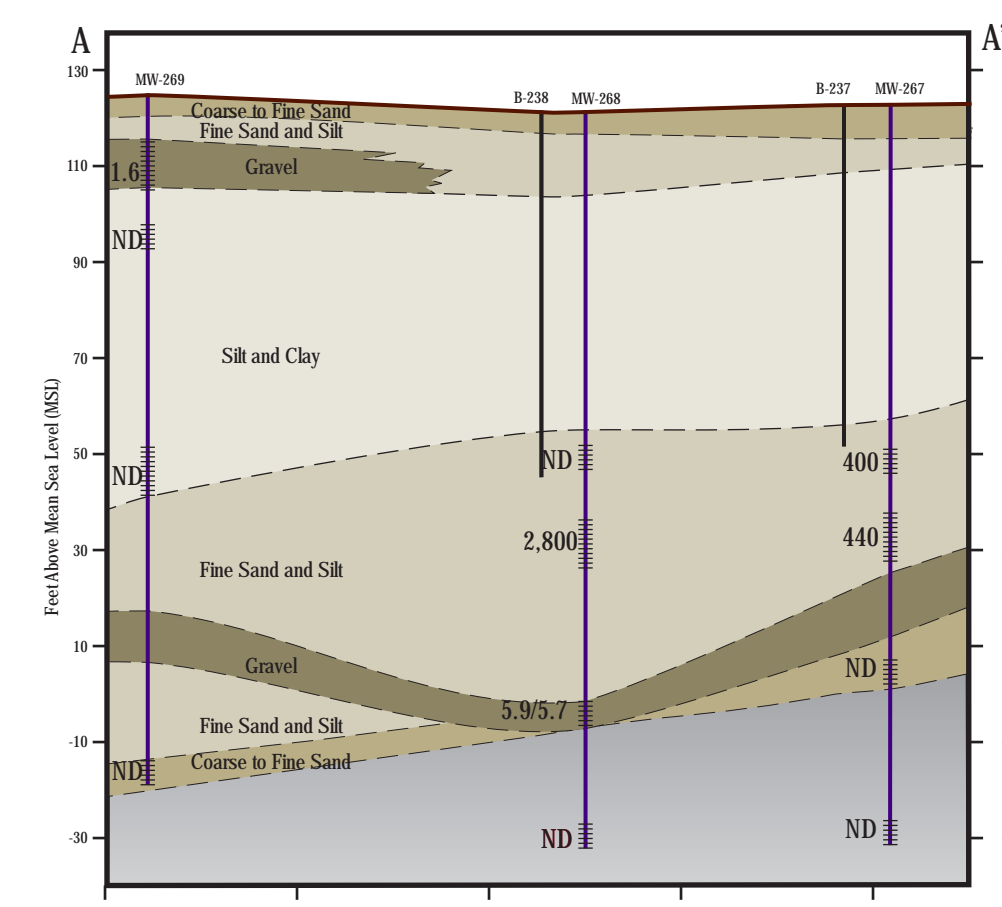
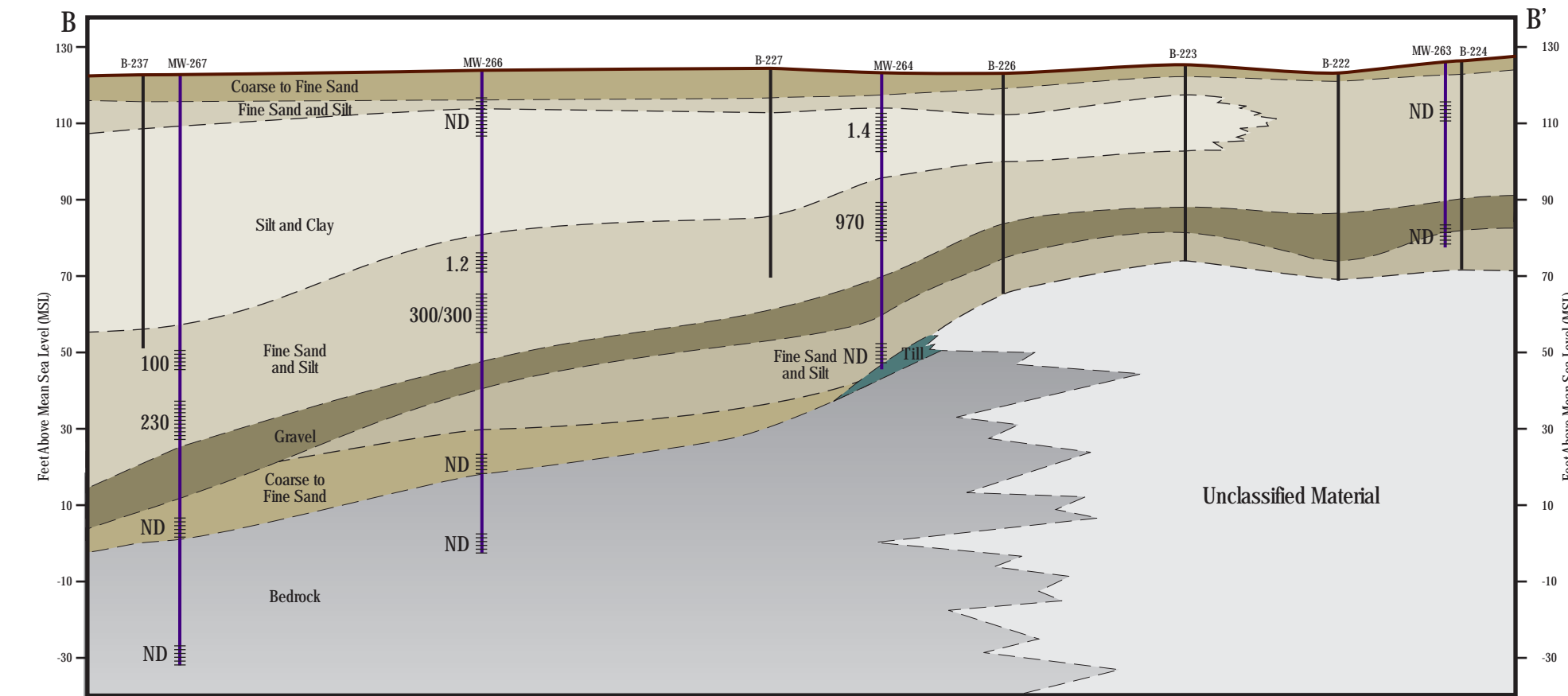
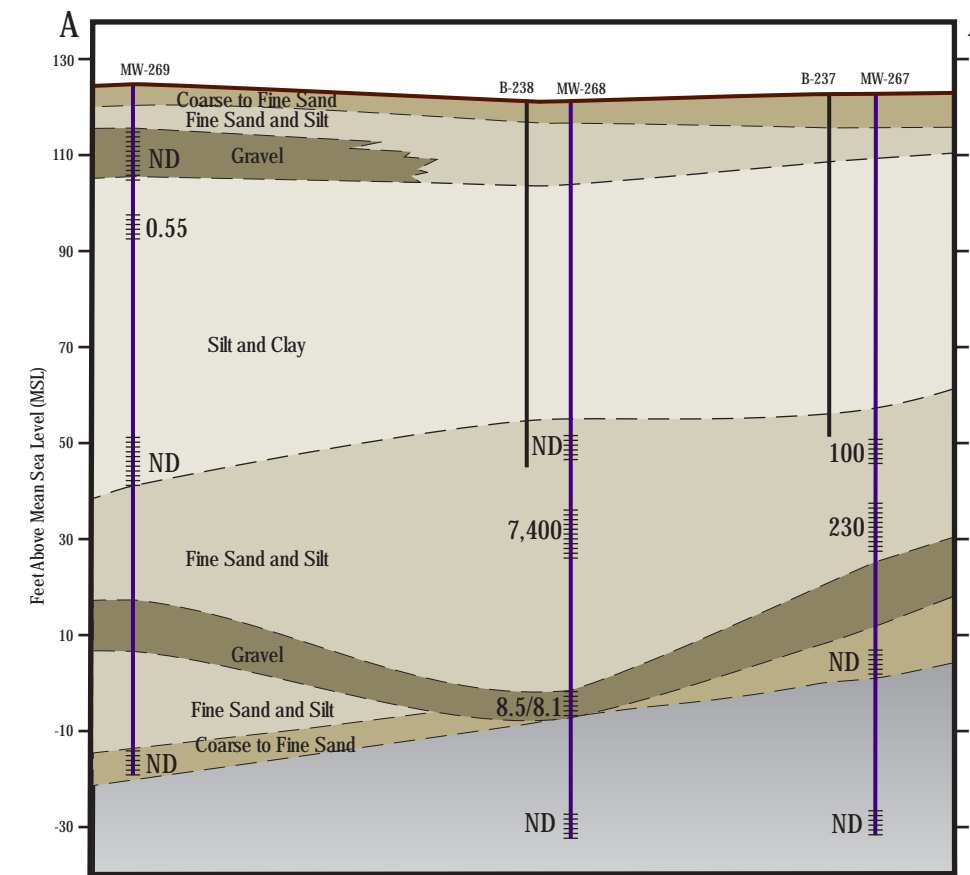


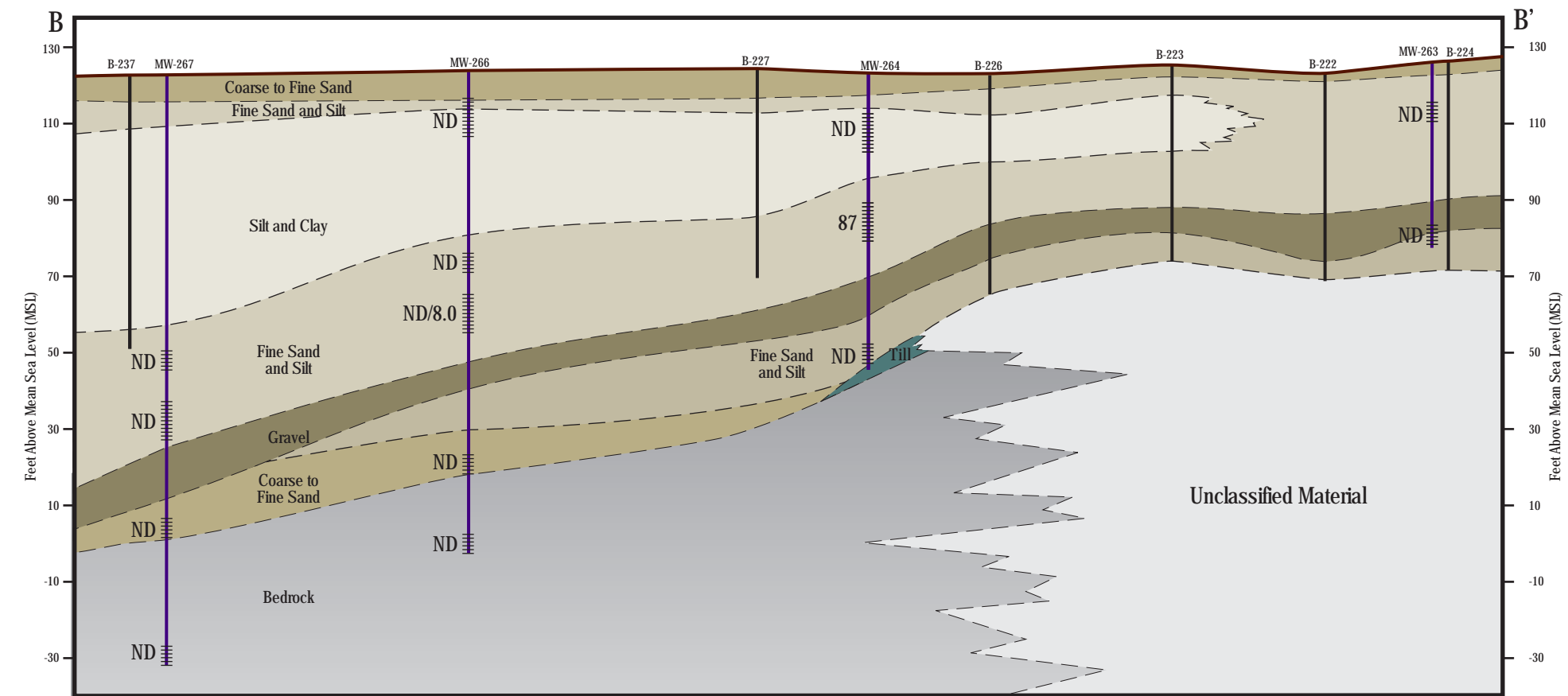
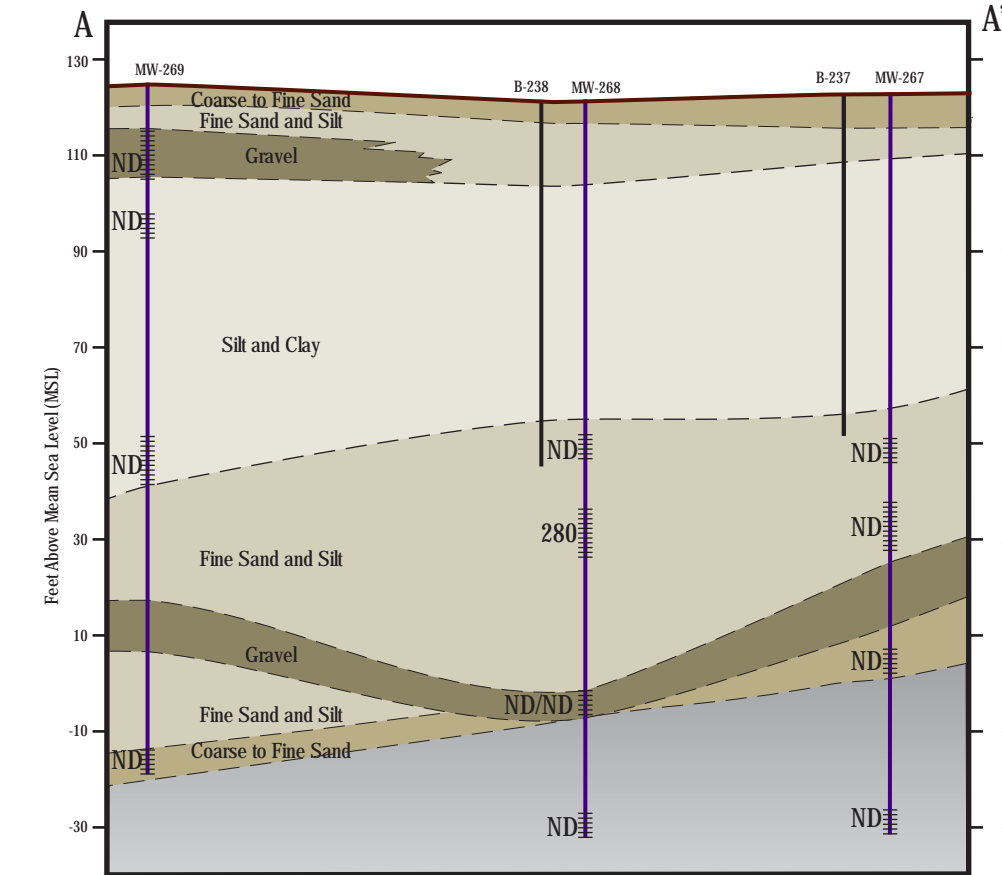
PCE Concentrations



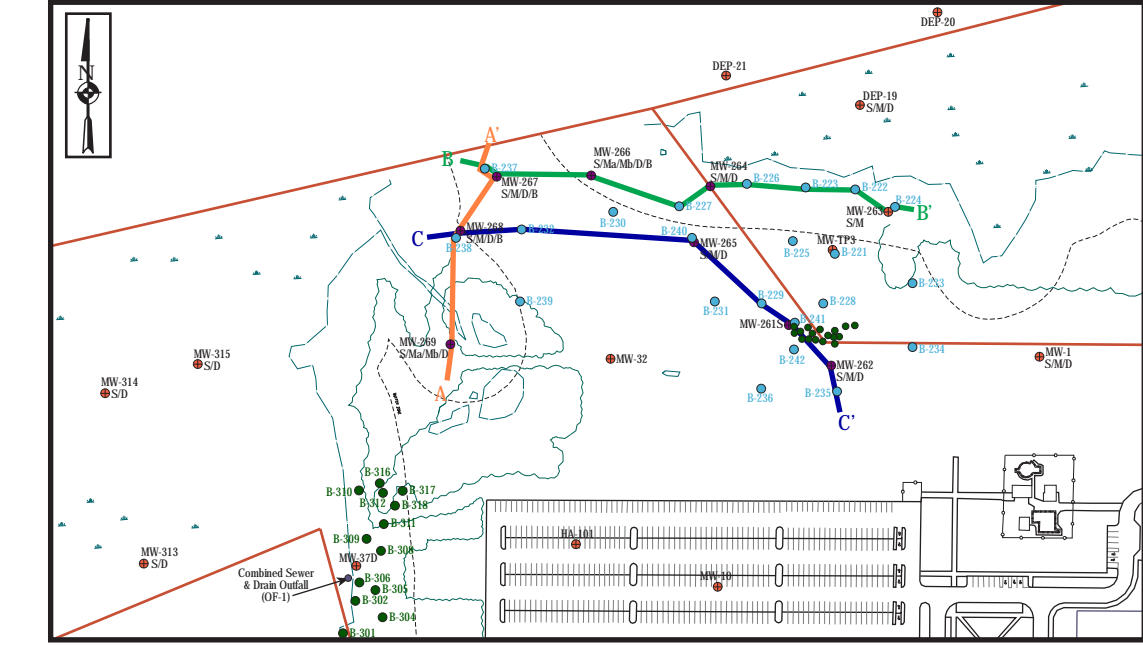
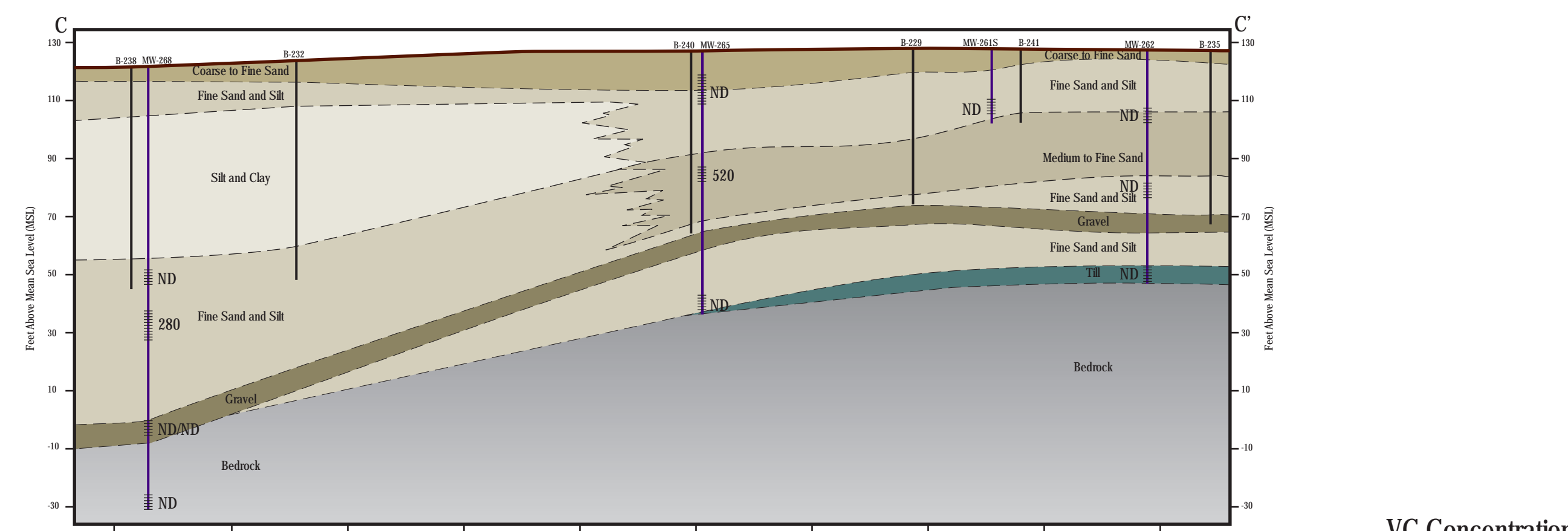
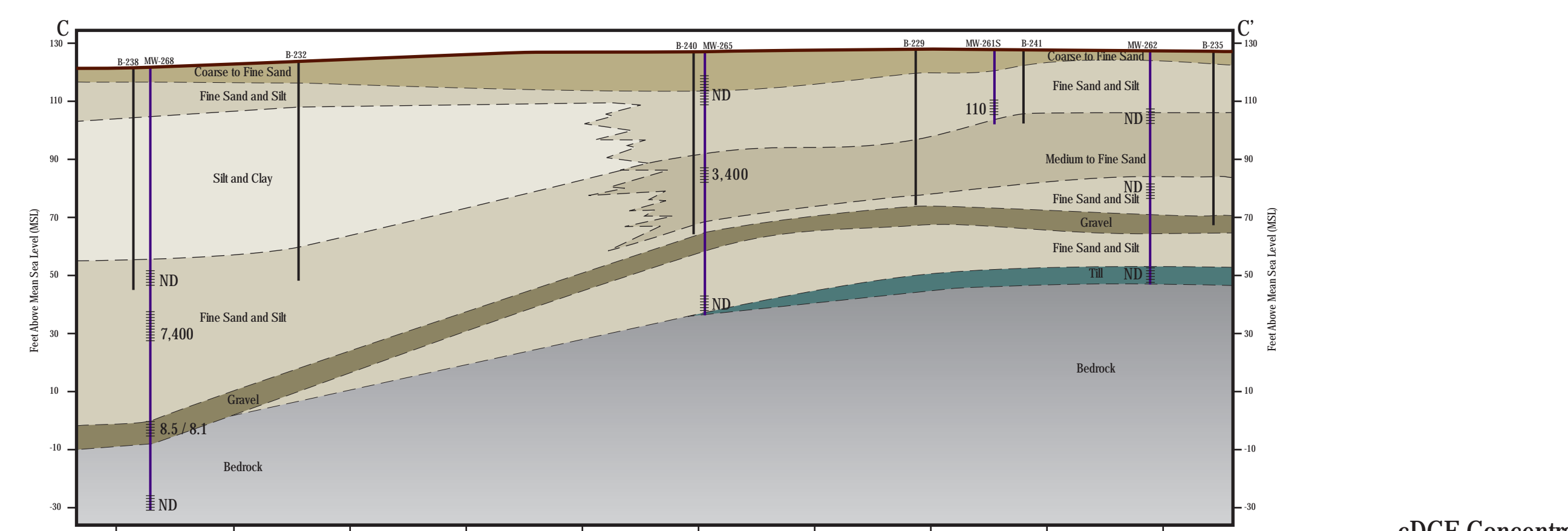
TCE Concentrations



cDCE Concentrations



VC Concentrations



Legend

- Monitoring Well: Well ID, Compound Concentration/Duplicate (ug/L), Screened Interval/Sample Point
- Soil Boring: Boring ID
- 10 Foot Well Screen
- 5 Foot Well Screen

Note: Concentrations presented are from the October 2003 groundwater sampling event.

Scale:
Horizontal Scale 1" = 80'
Vertical Scale 1" = 40'

Figure 12B - Northern Area Generalized Geologic Cross-Section Showing CVOC Concentrations - October 2003
Former Raytheon Facility - Wayland, MA